



JSF
TECHNOLOGIES
SOLAR TRAFFIC SOLUTIONS

www.JSFTech.com

sales@JSFTech.com

1-800-990-2454




AB-2400-20W

Pedestrian Activated Flashing Beacon



SELF-CONTAINED 20 WATT SOLAR ENGINE

	Solar Panel Solar Cell - Monocrystalline Silicon Rated Power (Pmp) 20 Watts Rated Voltage (Vmp) 18 VDC Rated Current (Imp) 1.1 Amps CE and TUV certified
	Solar Angle 7° (Flat) 44° (Standard)
	Standard Battery Bank AGM 12V, 18 Ah - UL Recognized, field replaceable
	Cold Weather Battery Bank Option AGM 12V, 16 Ah - UL Recognized, field replaceable
	Solar Engine Housing Material A5052 Sheet Aluminum (Enclosure) 6061-T6 Aluminum (Mount)
	Solar Engine Dimensions 15.75" x 13.25" X 4.5" (40 x 33.7 x 11.5cm)*

POWER MANAGEMENT

Rated Usage	300 cycles per day, 25 second activation
Charged Capacity	Up to 30 days at rated usage
Automatic Light Control (ALC)	Various stages of brightness for different solar conditions and battery levels

SYSTEM PROTECTION

Low Voltage Disconnect	9.5 VDC
Over Current Protection	1.8 Amp PTC auto-reset fuse
Self Monitoring	Visual notification of sub-optimal operation

LED BEACON SIGNAL HEAD

Standard Followed	ITE VTCSH-STD 2005
LED Beacon Signal Head Setup	Dual Heads Pole Top Mounting
Lens Material	UV stabilized polycarbonate and Abrasion resistant
LED Housing	100% Polycarbonate
LED Size	8" Diameter (200 mm)* 12" Diameter (300mm)*
LED Housing Dimensions	8" head - 14" x 10" x 6" (35 x 25 x 16 cm)* 12" head - 17" x 14" x 6" (44 x 25 x 17 cm)*
Std. LED Color Options	Amber or Red (custom colors available)

COMMUNICATION

Band of Operation	ISM Band (902-928 MHz)
Compliance	FCC and IC Compliant
Range	Up to 0.25 miles (400 m) with line of sight
Network Addresses	16 unique addresses to avoid interference between multiple crosswalk locations
Compatibility	Can communicate with other AB units

SYSTEM OPTIONS

LED & Solar Engine Housing Colors	Yellow, Black or Green (custom colors available)
Mounting Options	Round Collar Mount: 2.5", 3.5", 5", 6" Wood Post Saddle Mount: 4" x 4", 6" x 6" Side Mount Bracket: 18", 36", and 48"



AVAILABLE WITH RED LEDS FOR STOP SIGNS, AMBER LEDS FOR WARNING SIGNS

SYSTEM OVERVIEW

Compliance	FHWA MUTCD Compliant
Standard Operation	Pedestrian Activated via push button or JSFT remote transmitters
Flash Pattern Options	MUTCD Standard (0.5 seconds ON, 0.5 seconds OFF) JSFT Strobe Energy Efficient Flash Pattern** MUTCD Wig - Wag JSFT Wig - Wag Strobe Energy Efficient Flash Pattern**
Activation Duration	Variable from 5 seconds to 4 hours
Std. Operating Temperature	14°F to +165°F (-10°C to +74°C)
Cold Weather Upgrade Option	-40°F to +176°F (-40°C to +80°C)
System Voltage	12 VDC
Packaged Dimensions	8" heads - 35" x 28" x 17" @ 66 lbs (89 x 71 x 43cm @ 30 kg)* 12" heads - 35" x 28" x 17" @ 76 lbs (89 x 71 x 43cm @ 35 kg)*

SIGNAL HEAD AND SOLAR ENGINE AVAILABLE WITH STANDARD COLOURS; YELLOW, BLACK, OR GREEN. CUSTOM COLOURS ARE ALWAYS AVAILABLE.



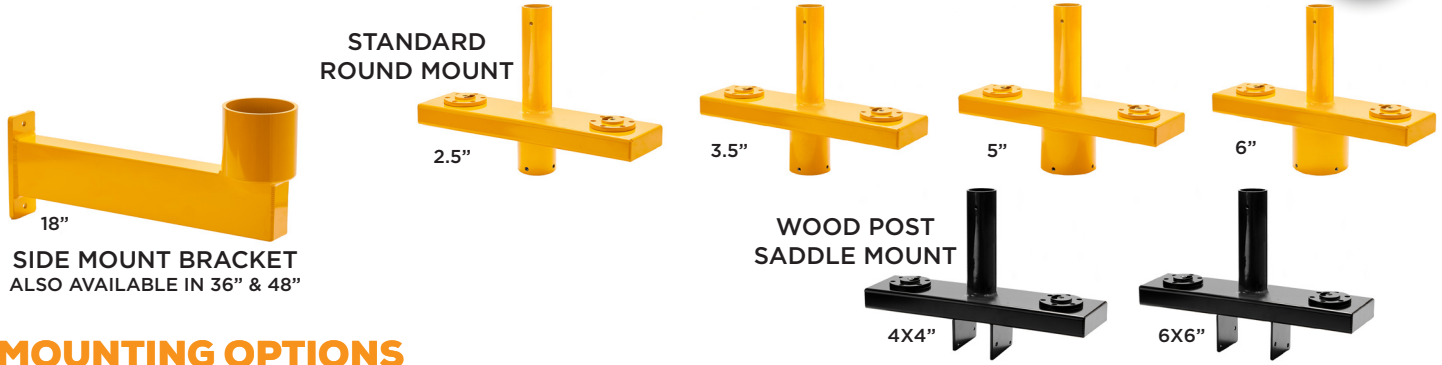
SALES Toll-Free 1.800.990.2454 sales@jsftech.com	SUPPORT Toll-Free 1.800.990.2454 support@jsftech.com	ADDRESS 6582 Bryn Road, Victoria, BC V8M 1X6
---	---	---

WARRANTY 5-year Limited Warranty for defects in workmanship and materials (excludes batteries and vandalism)

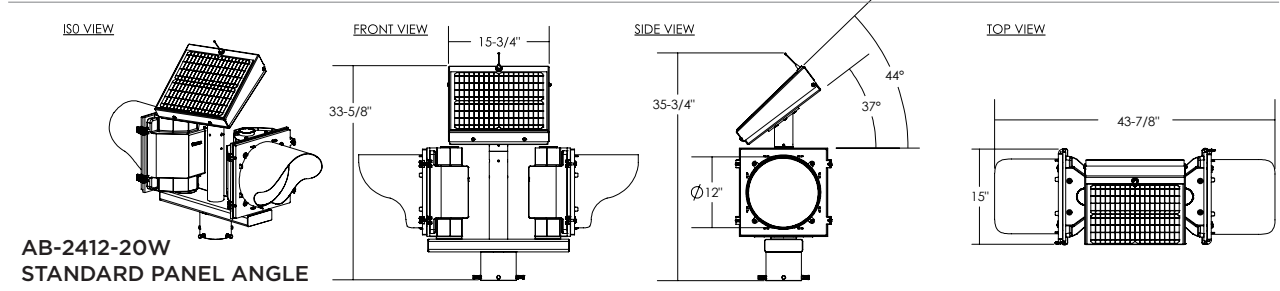
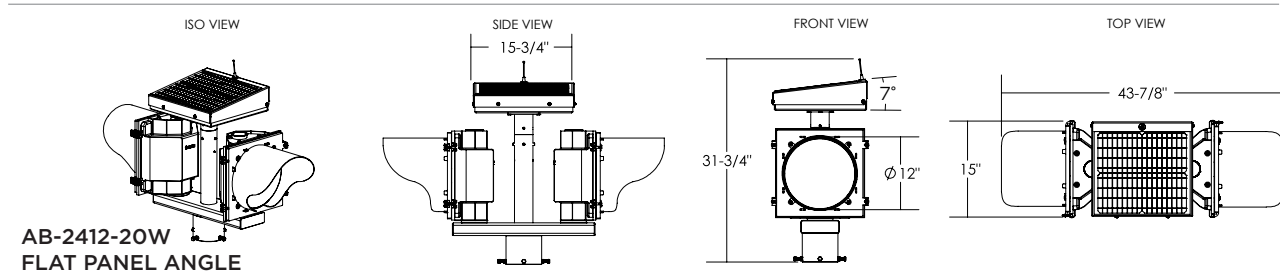
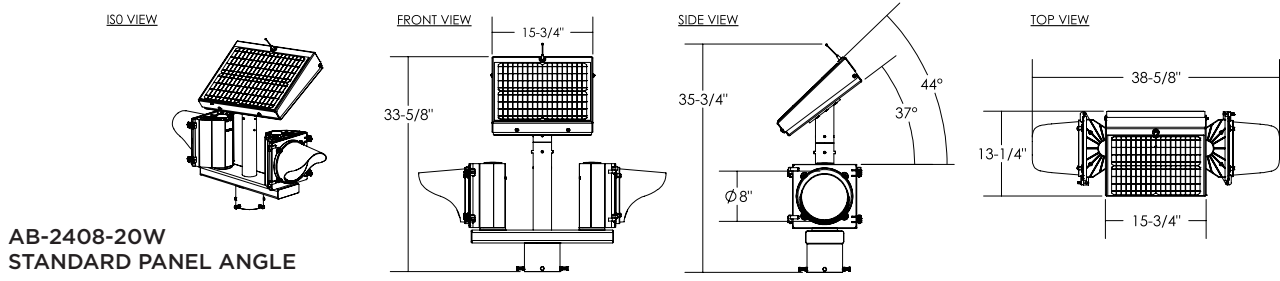
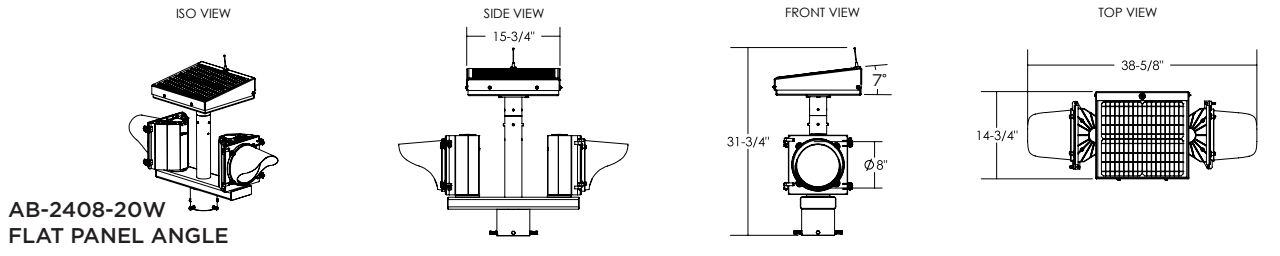
*All measurements and weights are approximate **50% power consumption of MUTCD



AB-2400-20W
Pedestrian Activated Flashing Beacon



MOUNTING OPTIONS



SYSTEM DRAWINGS