



**JSF**  
TECHNOLOGIES  
ADVANCED TRAFFIC SOLUTIONS

www.JSFTech.com

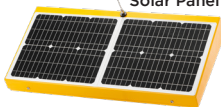
sales@JSFTech.com

1-800-990-2454

## AB-2400-40W Pedestrian Activated Flashing Beacon



### SELF-CONTAINED 40 WATT SOLAR ENGINE

	Solar Cell - Monocrystalline Silicon Rated Power (Pmp) 40 Watts Rated Voltage (Vmp) 18 VDC Rated Current (Imp) 2.2 Amps CE and TUV certified
Solar Angle	7° (Flat) 44° (Standard)
Standard Battery Bank	2 x AGM 12V, 18 Ah - UL Recognized, field replaceable
Cold Weather Battery Bank Option	2 x AGM 12V, 16 Ah - UL Recognized, field replaceable
Solar Engine Housing Material	A5052 Sheet Aluminum (Enclosure) 6061-T6 Aluminum (Mount)
Solar Engine Dimensions	30.875" x 13.25" x 4.5" (78.4x33.7x11.5cm)*

### POWER MANAGEMENT

Rated Usage	300 cycles per day, 25 second activation
Charged Capacity	Up to 30 days at rated usage
Automatic Light Control (ALC)	Various stages of brightness for different solar conditions and battery levels

### SYSTEM PROTECTION

Low Voltage Disconnect	9.5 VDC
Over Current Protection	1.8 Amp PTC auto-reset fuse
Self Monitoring	Visual notification of sub-optimal operation

### LED BEACON SIGNAL HEAD

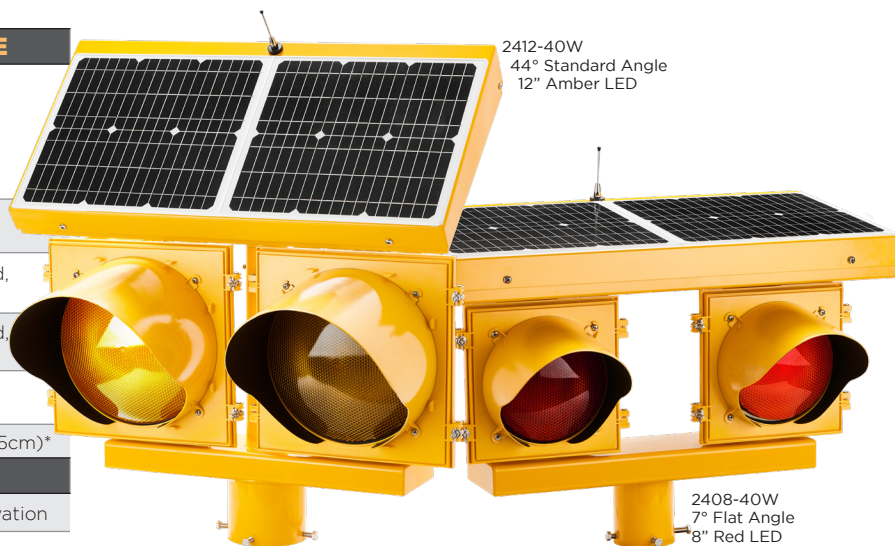
Standard Followed	ITE VTCSS-STD 2005
LED Beacon Signal Head Setup	Dual Heads Pole Top Mounting
Lens Material	UV stabilized polycarbonate and Abrasion resistant
LED Housing	100% Polycarbonate
LED Size	8" Diameter (200 mm)* 12" Diameter (300mm)*
LED Housing Dimensions	8" head - 14" x 10" x 6" (35 x 25 x 16 cm)* 12" head - 17" x 14" x 6" (44 x 25 x 17 cm)*
Std. LED Color Options	Amber or Red (custom colors available)

### COMMUNICATION

Band of Operation	ISM Band (902-928 MHz)
Compliance	FCC and IC Compliant
Range	Up to 0.25 miles (400 m) with line of sight
Network Addresses	16 unique addresses to avoid interference between multiple crosswalk locations
Compatibility	Can communicate with other AB units

### SYSTEM OPTIONS

LED & Solar Engine Housing Colors	Yellow, Black or Green (custom colors available)
Mounting Options	Round Collar Mount: 2.5", 3.5", 5", 6" Wood Post Saddle Mount: 4" x 4", 6" x 6" Side Mount Bracket: 18", 36", and 48"

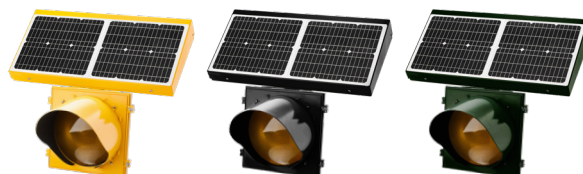


AVAILABLE WITH RED LEDS FOR STOP SIGNS, AMBER LEDS FOR WARNING SIGNS

## SYSTEM OVERVIEW

Compliance	FHWA MUTCD Compliant
Standard Operation	Pedestrian Activated via push button or JSFT remote transmitters
Flash Pattern Options	MUTCD Standard (0.5 seconds ON, 0.5 seconds OFF) JSFT Strobe Energy Efficient Flash Pattern** MUTCD Wig - Wag JSFT Wig - Wag Strobe Energy Efficient Flash Pattern**
Activation Duration	Variable from 5 seconds to 4 hours
Std. Operating Temperature	14°F to +165°F (-10°C to +74°C)
Cold Weather Upgrade Option	-40°F to +176°F (-40°C to +80°C)
System Voltage	12 VDC
Packaged Dimensions	8" heads - 35" x 28" x 17" @ 66 lbs (89 x 71 x 43cm @ 30 kg)* 12" heads - 35" x 28" x 17" @ 76 lbs (89 x 71 x 43cm @ 35 kg)*

SIGNAL HEAD AND SOLAR ENGINE AVAILABLE WITH STANDARD COLOURS;  
YELLOW, BLACK, OR GREEN. CUSTOM COLOURS ARE ALWAYS AVAILABLE.



### SALES

Toll-Free 1.800.990.2454  
sales@jsfttech.com

### SUPPORT

Toll-Free 1.800.990.2454  
support@jsfttech.com

### ADDRESS

6582 Bryn Road,  
Victoria, BC V8M 1X6

**WARRANTY** 5-year Limited Warranty for defects in workmanship and materials (excludes batteries and vandalism)

\*All measurements and weights are approximate \*\*50% power consumption of MUTCD



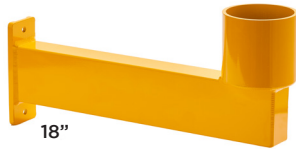
**JSF**  
TECHNOLOGIES  
ADVANCED TRAFFIC SOLUTIONS

www.JSFTech.com

sales@JSFTech.com

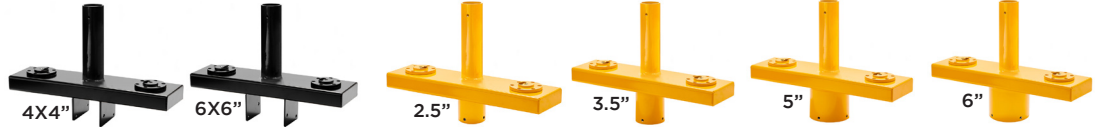
1-800-990-2454

## AB-2400-40W Pedestrian Activated Flashing Beacon



**SIDE MOUNT BRACKET**  
ALSO AVAILABLE IN 36" & 48"

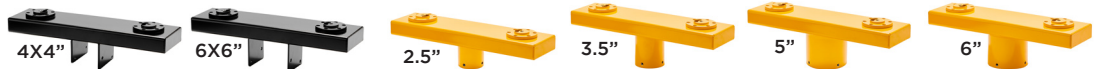
### STANDARD PANEL ANGLE MOUNTS



### WOOD POST SADDLE MOUNT

### STANDARD ROUND MOUNT

### FLAT PANEL ANGLE MOUNTS

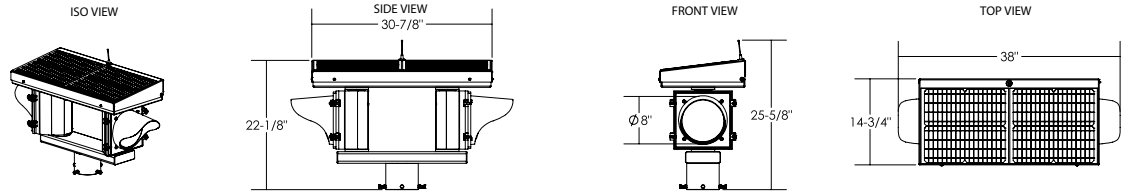


### WOOD POST SADDLE MOUNT

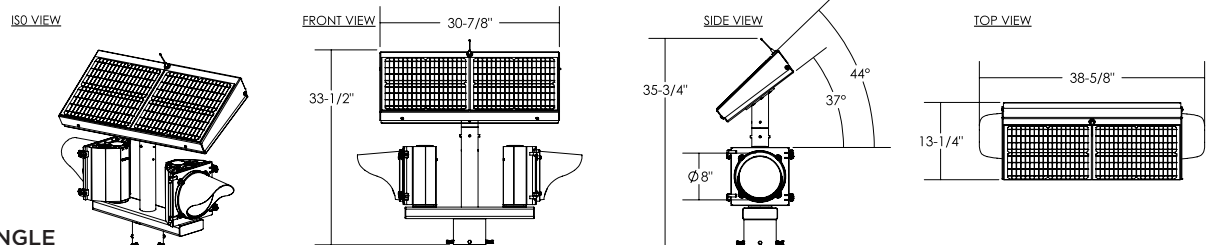
### STANDARD ROUND MOUNT

## MOUNTING OPTIONS

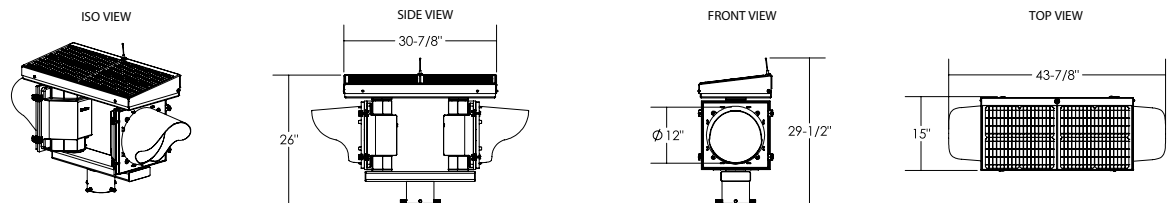
**AB-2408-40W  
FLAT PANEL ANGLE**



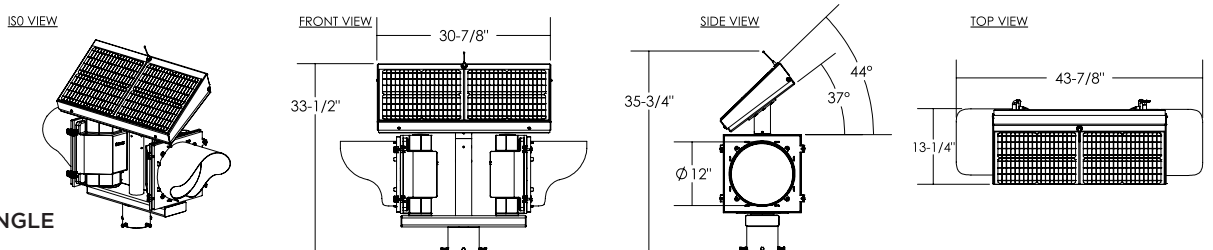
**AB-2408-40W  
STANDARD PANEL ANGLE**



**AB-2412-40W  
FLAT PANEL ANGLE**



**AB-2412-40W  
STANDARD PANEL ANGLE**



## SYSTEM DRAWINGS

Copyright © 2020 JSF Technologies. All Rights Reserved.

Specification and information contained in this data sheet are furnished for informational use only, and are subject to change at any time without notice.