



JSF
TECHNOLOGIES
ADVANCED TRAFFIC SOLUTIONS

www.JSFTech.com

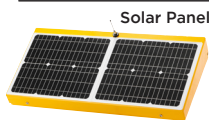
sales@JSFTech.com

1-800-990-2454

AB-9207-40W RRFB Rectangular Rapid Flashing Beacon



SELF-CONTAINED 40 WATT SOLAR ENGINE



Solar Panel

Solar Cell - Monocrystalline Silicon
Rated Power (Pmp) 40 Watts
Rated Voltage (Vmp) 18 VDC
Rated Current (Imp) 2.2 A
Certifications: CE and TUV certified

Solar Angle

44° (Standard)

Standard Battery Bank

2 x AGM 12V, 18 Ah - UL Recognized,
field replaceable

Cold Weather Battery Bank Option

2 x AGM 12V, 16 Ah - UL Recognized,
field replaceable

Solar Engine Housing Material

A5052 Sheet Aluminum (Enclosure)
6061-T6 Aluminum (Mount)

Solar Engine Dimensions

30.875" x 13.25" x 4.5" (78.4 x 33.7 x 11.5cm)*

POWER MANAGEMENT

Rated Usage

300 cycles per day, 25 second activation

Charged Capacity

Up to 30 days at rated usage

Automatic Light Control (ALC)

Various stages of brightness for different
solar conditions and battery levels

SYSTEM PROTECTION

Low Voltage Disconnect

9.5 VDC

Over Current Protection

1.8 Amp PTC auto-reset fuse

Self Monitoring

Visual notification of sub-optimal operation

SINGLE RRFB LIGHTBAR

Standard Followed

ITE VTCSTH-STD 2005, SAE J595

RRFB Housing Material

A5052 Sheet Aluminum (Lightbar)
6061-T6 Aluminum (Mount)

LED Size

3" x 7" (76.2 x 177.8mm)* x two per lightbar

Tell Tale LED Size

1" x 2" (25.5 x 51mm)*

Housing Dimensions

24" x 3.0625" x 3.75" (61cm x 7.75cm x 9.5cm)*

Std. LED Color Options

Amber or Red (custom colors available)

RRFB Mount

Universal Jaw Mount
Telespar Jaw Mount
Side Mount Bracket

COMMUNICATION

Band of Operation

ISM Band (902-928 MHz)

Compliance

FCC and IC Compliant

Range

Up to 0.25 miles (400 m) with line of sight

Network Addresses

16 unique addresses to avoid interference
between multiple crosswalk locations

Compatibility

Can communicate with other AB units

SYSTEM OPTIONS

LED & Solar Engine Housing Colors

Yellow, Black or Green
(custom colors available)

Mounting Options

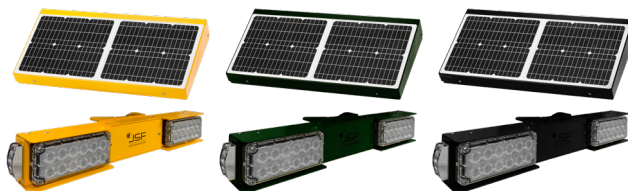
Round Pole Collars: 2.5", 3.5", 5" and 6"
Telespar Mount: 2"
Square Wood Post Mount: 4" x 4", 6" x 6"
Side Mount Bracket: 12", 18" and custom
lengths available
Custom Mounts Available



SYSTEM OVERVIEW

Compliance	FHWA MUTCD compliant
Standard (Std.) Operation	Pedestrian Activated via push button or JSFT remote transmitters
Flash Pattern Options	RRFB Pattern (WW + S) FHWA IA-21 Approved
Activation Duration	Variable from 5 seconds to 4 hours
Std. Operating Temperature	14°F to +165°F (-10°C to +74°C)
Cold Weather Upgrade Option	-40°F to +176°F (-40°C to +80°C)
System Voltage	12 VDC
Packaged Dimensions	36" x 18" x 18" @ 71 lbs (91.4 x 45.7 x 45.7cm @ 32.2 kg)*

SIGNAL HEAD AND SOLAR ENGINE AVAILABLE WITH STANDARD COLOURS; YELLOW, BLACK, OR GREEN. CUSTOM COLOURS ARE ALWAYS AVAILABLE.



SALES

Toll-Free 1.800.990.2454
sales@jsfttech.com

SUPPORT

Toll-Free 1.800.990.2454
support@jsfttech.com

ADDRESS

6582 Bryn Road,
Victoria, BC V8M 1X6

WARRANTY 5-year Limited Warranty for defects in workmanship and materials (excludes batteries and vandalism)

*All measurements and weights are approximate



JSF
TECHNOLOGIES
ADVANCED TRAFFIC SOLUTIONS

www.JSFTech.com

sales@JSFTech.com

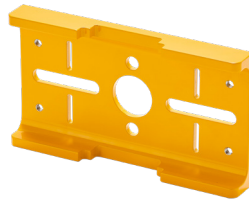
1-800-990-2454



AB-9207-40W RRFB Rectangular Rapid Flashing Beacon



UNIVERSAL JAW MOUNT



TELESPAR JAW MOUNT



SIDE MOUNT BRACKET

RRFB LIGHTBAR MOUNTING



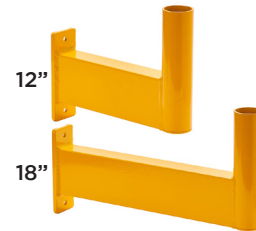
2.5" 3.5" 5" 6"

ROUND POLE MOUNT



4x4" 6x6"

WOOD SADDLE MOUNT



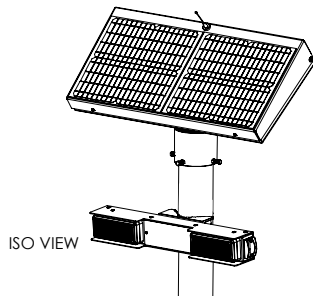
MOUNTING ARMS
(CUSTOM LENGTHS AVAILABLE)



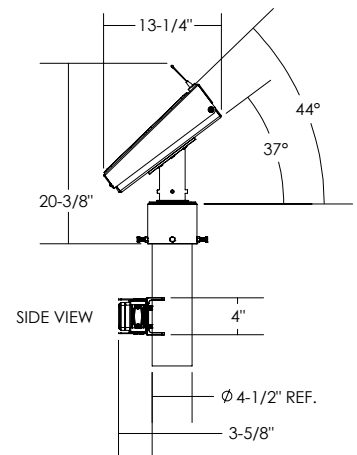
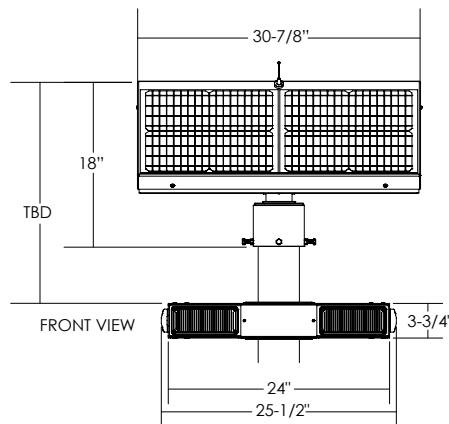
2"

TELESPAR
MOUNT

SOLAR ENGINE MOUNTING OPTIONS



AB-9207-40W



SYSTEM DRAWINGS

Copyright © 2020 JSF Technologies. All Rights Reserved.
Specification and information contained in this data sheet are furnished for informational use only, and are subject to change at any time without notice.